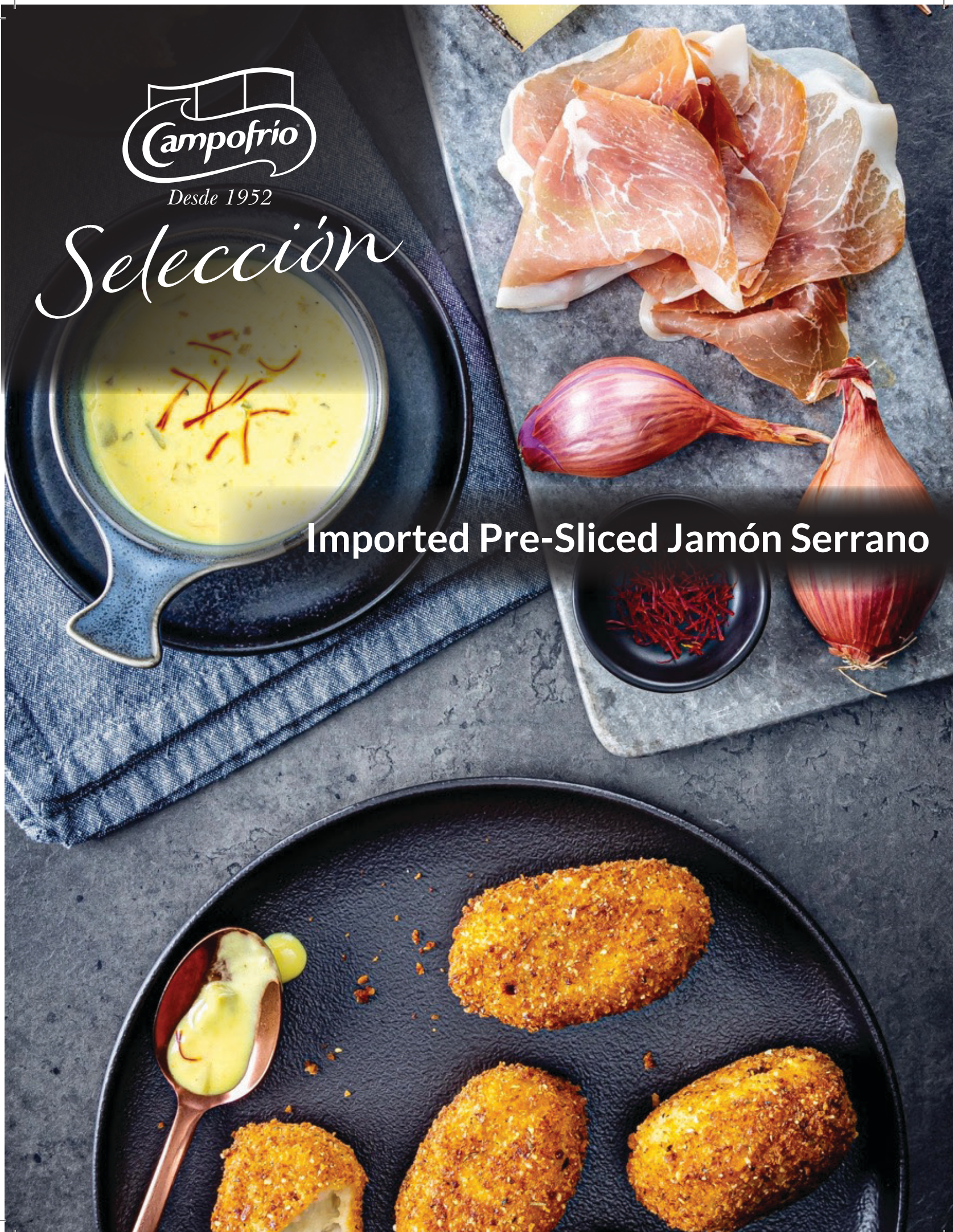




Desde 1952

Selección

Imported Pre-Sliced Jamón Serrano





IMPORTED PRE-SLICED JAMÓN SERRANO 70035

16/14 oz. Vacuum Packed, Twin-Pack, 2/7 oz. Units per Pack

With the need for products that can be adapted to their hectic lifestyles, consumers are drawn to our convenient pre-sliced Jamón Serrano. Individually sealed with interleaf inserts for easy peeling and handling, it has never been easier to savor the flavors of Spanish delicacies anytime, anywhere. Imported from Spain, our twin pack features Jamón Serrano that's slowly cured and aged for more than 14 months, then carefully cut into 24 consistent slices (12 per each pack), for an easy, time-saving meal solution. Our pre-sliced Jamón Serrano has a long shelf life and consumers can rest assured it maintains quality and flavor from the Spanish mountains, to the package, and to the plate.

There's no slowing down on snacking! Time-strapped consumers can rely on our pre-sliced Jamón Serrano for any snacking solution. Add it to rollups, sandwiches, skewers, tapas, charcuterie boards, or try it in our Jamón Croquettes recipe, a Spanish staple, with a side of vibrant Safron Queso.

Sensory Specifications

Delicately sweet, traditional dry-cured Spanish ham, Jamón Serrano sports a deep, rosy hue and has sweet, white fat, a slightly chewy texture and sweet, earthy aromas.

PRODUCT SPECIFICATIONS

PRODUCT NAME	Imported Pre-Sliced Jamón Serrano
SKU	70035
UPC CODE	017869700354
MIN. SHELF LIFE	Guaranteed 45 days upon arrival
MAX. SHELF LIFE	270 days
CASE DIMENSIONS	17.5"L x 9.5"W x 9"H
CASE CODE (GTIN)	90017869700357
# PKG PER CASE	16
CASES PER LAYER	10
LAYERS PER PALLET	5
CASES PER PALLET	50
POUNDS PER PACKAGE	0.875 LB
NET CASE WEIGHT	14.1 LBS (net); 16.96 LBS (gross)
POUNDS PER PALLET	705 LBS (net); 914.47 LBS (gross)
CASE CUBE (CUBIC FEET)	0.865
PACKAGE DIMENSIONS	0.47"L x 17"W x 8.46"H
PACKAGES PER PALLET	800
STORAGE/HANDLING	Keep Refrigerated
MIN. STORAGE TEMP	32°F
MAX. STORAGE TEMP	41°F



Nutrition Facts

Serving Size 2 Slices (30g)
Servings Per Container 6

Amount Per Serving

Calories 100 Calories from Fat 50
% Daily Value*

Total Fat 6g	9%
Saturated Fat 2g	12%
Trans Fat 0g	0%
Cholesterol 25mg	8%
Sodium 670mg	28%
Total Carbohydrate 0g	0%
Dietary Fiber 0g	0%
Sugars 0g	
Protein 10g	

Vitamin A 0% • Vitamin C 0%
Calcium 0% • Iron 4%

*Percent Daily Values are based on a 2,000 calorie diet.

Ingredients: Pork, Salt, Potassium Nitrate, Sodium Nitrite.



Scan QR code
below for video

