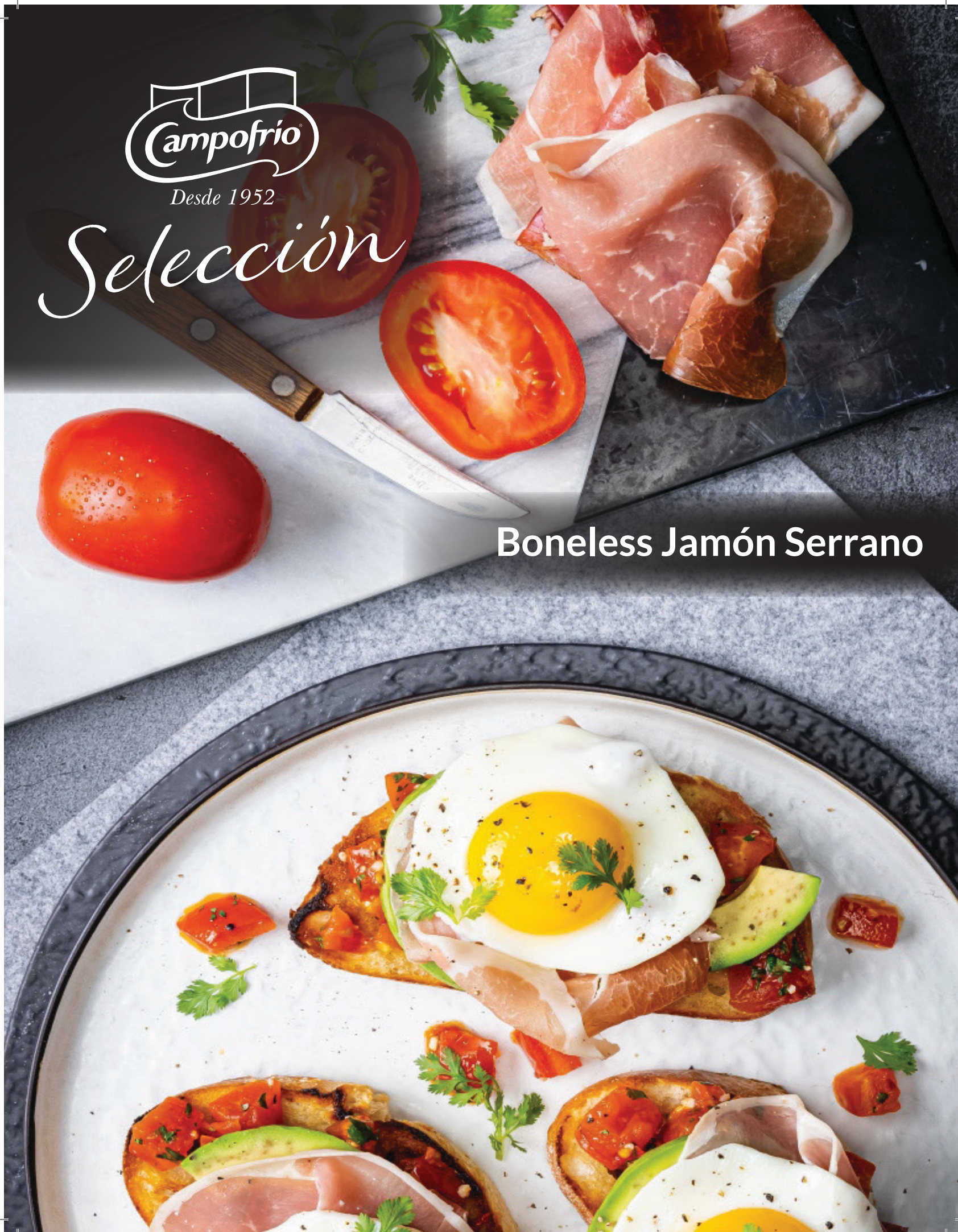




Desde 1952

*Selección*

**Boneless Jamón Serrano**







## IMPORTED BONELESS JAMÓN SERRANO 10038

1/12.125 lbs. (Average) Vacuum Packed, Whole Piece

Air, salt, and time are the three key ingredients to our Boneless Jamón Serrano. Salt-cured, dried and aged for more than 14 months, our Boneless Jamón Serrano transforms a simple leg into a beautifully delicate ham packed with exquisite tastes. Spanish for “mountain ham,” Jamón Serrano is hung and air-dried in Spanish ranges, then imported to deliver all the unique flavors, textures and aromas to transport your taste buds straight to the mountains.

Boneless Jamón Serrano means hassle-free prepping, slicing and storing. Relish in this product's unique, mellow flavors by eating one melt-in-your-mouth slice at a time. Use larger pieces to flavor soups or stews, feature on boards alongside seasonal produce, or atop rustic bread.

### Sensory Specifications

Rich in protein and low in carbs and sugar, this high-quality meat is ideal for incorporating rich, nutty flavors into meals suited for Mediterranean, paleo and keto eating styles. Containing no artificial flavors, colors, or ingredients, our Boneless Jamón Serrano is made with the highest standards of quality, uniformity and safety, ensuring clean and consistent eating experiences.

PRODUCT SPECIFICATIONS	
PRODUCT NAME	Boneless Jamón Serrano
SKU	10038
UPC CODE	N/A
MIN. SHELF LIFE	Guaranteed 45 days upon arrival
MAX. SHELF LIFE	270 days
CASE DIMENSIONS	18.5"L x 11"W x 4.5"H
CASE CODE (GTIN)	90017869100386
# PKG PER CASE	1
CASES PER LAYER	8
LAYERS PER PALLET	13
CASES PER PALLET	104
POUNDS PER PACKAGE	12.125 LBS (average)
NET CASE WEIGHT	12.125 LBS (average)
POUNDS PER PALLET	1,261 LBS (net); 1,442 LBS (gross)
CASE CUBE (CUBIC FEET)	0.53
PACKAGE DIMENSIONS	Varied
PACKAGES PER PALLET	104
STORAGE/HANDLING	Keep Refrigerated
MIN. STORAGE TEMP	32°F
MAX. STORAGE TEMP	41°F



### Nutrition Facts

Serving Size About 2 Slices (28g)  
Servings Per Container Varied

Amount Per Serving	
<b>Calories</b> 80	Calories from Fat 45
% Daily Value*	
<b>Total Fat</b> 5g	<b>8%</b>
Saturated Fat 2g	<b>10%</b>
Trans Fat 0g	<b>0%</b>
<b>Cholesterol</b> 20mg	<b>7%</b>
<b>Sodium</b> 560mg	<b>23%</b>
<b>Total Carbohydrate</b> 0.1g	<b>0%</b>
Dietary Fiber 0g	<b>0%</b>
Sugars 0g	
<b>Protein</b> 8g	

Vitamin A 0% • Vitamin C 0%  
Calcium 0% • Iron 3%

\*Percent Daily Values are based on a 2,000 calorie diet.

Ingredients: Pork, Salt, Potassium Nitrate, Sodium Nitrite.

**No UPC code  
available**

**Scan QR code  
below for video**

